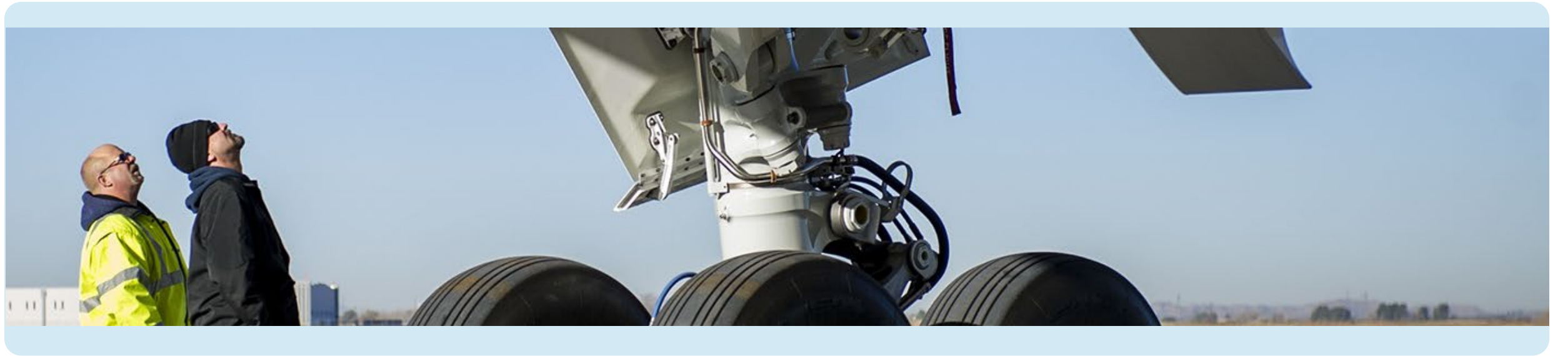




Supplier Quality || Functional Engagement Flow Charts

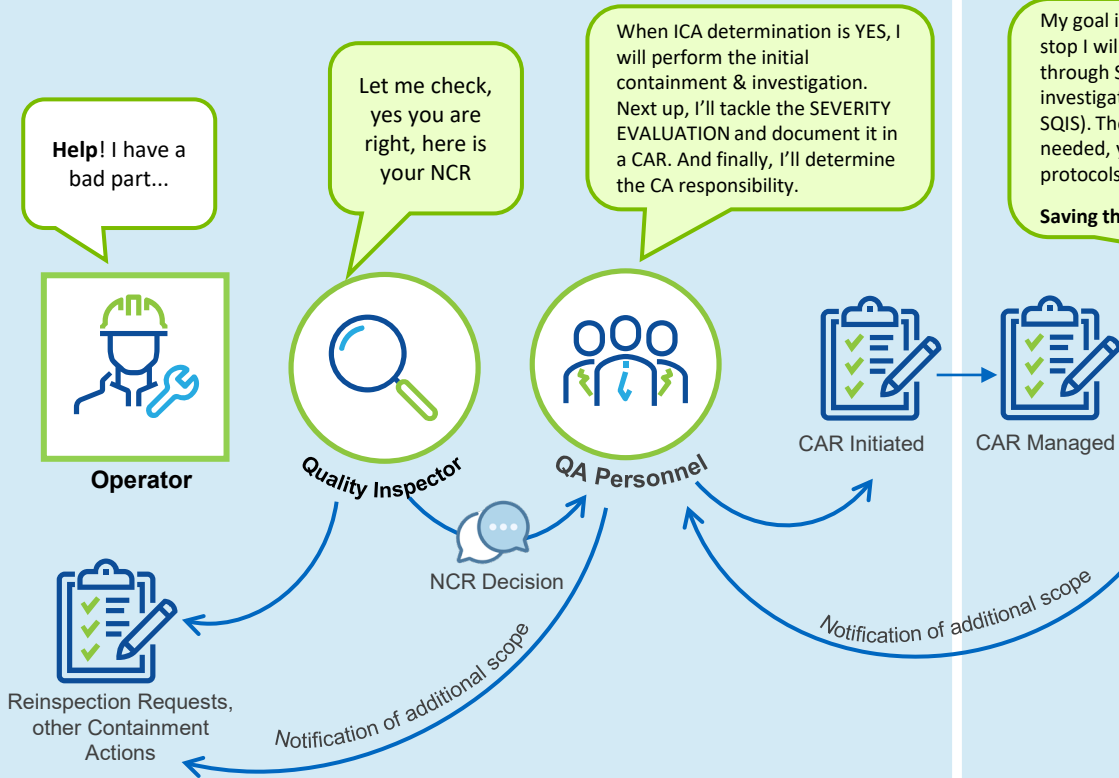
This slide pack offers an insight of interactions between **SQ-Regional Operations**, **SQ-Prevention** and **Supplier Quality Assurance Investigation (SQAI) teams** within **Boeing**.

The information on the following slides demonstrates how our **internal** and **external SQ** teams work in **unison** alongside **supplier focals** to investigate, manage, and complete **Non-Conformance Records**, **Work Movement**, **Requirements Consumption** and **Product Verification (ex. First Article Inspection)** activity.



The Life Cycle of a Nonconformance Record: From Identification to Resolution

Boeing Factory (Production Line) Operator, Quality Inspector & QA Facing



Boeing Factory (SQ Support) Program Facing & Regional Ops

My goal is to investigate nonconformance. First stop I will notify the supplier and initiate that CA through SQIS. Next up, I will complete the investigation and inform the supplier (through SQIS). Then I'll get the approved CA response and if needed, you bet I'm rolling out the containment protocols!

Saving the day, one nonconformance at a time!

Supplier Site Regional Ops & Supplier Focal

My Objectives are to support the Investigation, perform Verifications, Liaise between Interested Parties. Additionally, I will perform First Part Rejection Tracking. I will also make recommendations on Containment Activities! (Where needed, of course!) Example: Postproduction RCR and/or Post Delivery BFAI!

I will validate the issue and then will perform the required containment to secure the situation and prevent any further escapement from my company. Next: I'll conduct RCCA and implement the necessary CA to tackle the problem head-on. Finally: I'll communicate back to Boeing with all the vital updates and findings!



Acronyms

- BFAI** – Boeing First Article Inspection
- CA** – Corrective Action
- CAR** – Corrective Action Response
- ICA** – Individual Containment Action
- MBU** – Manufacturing Business Unit

- NCR** – Non-Conformance Record
- PA** – Procurement Agent
- QA** – Quality Assurance
- RCCA** – Root Cause Corrective Action
- RCR** – Requirements Consumption Review
- SCE** – Supply Chain Engineering
- SQAI** – Supplier Quality Assurance Investigator

- SQIS** – Supplier Quality Information System
- SQR** – Supplier Quality Representative
- SQRR** – Supplier Quality Readiness Representative
- WM** – Work Movement
- WMMS** – Work Movement Management System

Raise Change of Charge (COC)

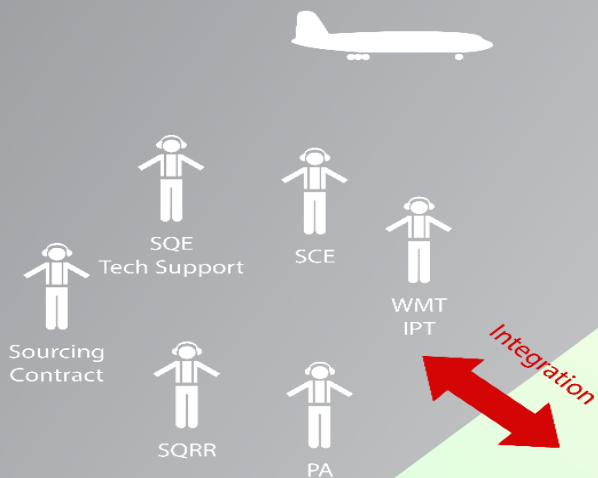
If the Supplier can demonstrate the raised issue was not caused by them, they will submit a CoC



The Work Movement Process Cycle: From Initiation to Execution

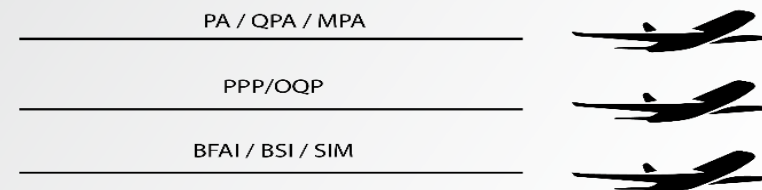
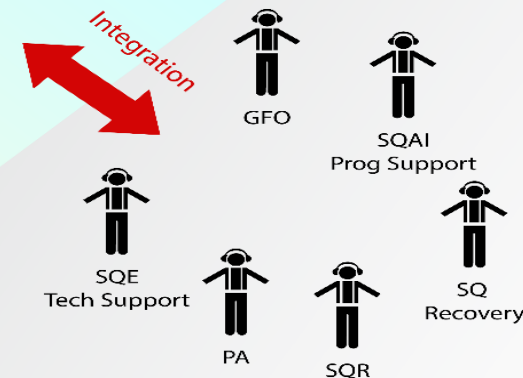
Initial Production

QRR QPA WM APQP RCR FPQ FAIR BFAI



Central Control Tower

Sustaining & Recovery Control Tower



Follow On Production

Acronyms

- | | | | | | |
|---|---|--|---|--|---|
| <ul style="list-style-type: none">APQP - Advanced Product Quality PlanningBFAI - Boeing First Article InspectionBSI - Boeing Source InspectionCT - Control Tower | <ul style="list-style-type: none">FAIR - First Article Inspection ReportFPQ - First Part QualificationGFO - Global Field OperationsMPA - Manufacturing Process AssessmentNCR - Nonconformance Record | <ul style="list-style-type: none">NOE - Notice of EscapementOQP - One Quality PlanPA - Procurement AgentPPP - Perfect Product PlanQPA WM - Quality Process Assessment | <ul style="list-style-type: none">QRR - Quality Readiness RepresentativeRCR - Requirements Consumption ReviewSC - Supply ChainSCE - Supply Chain Engineering | <ul style="list-style-type: none">SER - Supplier Evaluation ReportSIM - SimulationSNN - Supplier Nonconformance NotificationSQAI - Supplier Quality Assurance Investigator/ | <ul style="list-style-type: none">SQE - Supplier Quality EngineeringSQRR - Supplier Quality Readiness RepresentativeWM - Work TransferWMT IPT - Work Management Tool Integrated Product Team |
|---|---|--|---|--|---|